



January through March 2021

Professional Development Calendar

Broome, Chenango, & Tioga Counties



**F O R M O R E I N F O R M A T I O N C A L L**

**( 6 0 7 ) 7 2 3 - 8 3 1 3**

**E X T E N S I O N 8 2 5**

**O R**

**1 - 8 0 0 - 2 8 1 - 8 7 4 1**

## TABLE OF CONTENTS

Contact Information	3
Professional Development Team	3
Training Policies	4
Payment Information	5
OCFS Training Categories	5
Broome County Trainings	6—7
Chenango County Trainings	8
Tioga County Trainings	9
On-Demand Virtual Training Available	9

## FAMILY ENRICHMENT NETWORK OFFICE LOCATIONS

### Johnson City

24 Cherry Street

### Norwich

21 South Broad Street

### Owego

1277 Taylor Road  
(in the Abide in the Vine building)

### **\*\* Parking Information \*\***

Johnson City: If you are coming to a training in the evening or the weekend, please use the visitor parking lot on the right side of the building in Johnson City, or park on the street. Please do not park in the fenced-in bus and employee parking lot.

Owego: The entrance to the building is on the left side and parking is available in that area.

Norwich: The training space at our Norwich office is located in the back of the building. Turn into the alley near the movie theater and park in the back parking lot.

# CONTACT CCR&R STAFF



Call	Phone	For information about
<b>JOHNSON CITY OFFICE</b>		
Leslie Vermaat, Trainer	723-8313 ext. 884	Training, online training, mentoring
Vacant, QI Specialist	723-8313 ext. 894	Grants, program assistance, start-up question
Cathy Lipski, CACFP Coordinator	723-8313 ext. 824	CACFP/food program, Health and CPR/First Aid training
Crystal Rozelle, CACFP Monitor	723-8313 ext. 825	CACFP, EIP questions/training registration
Elaine Johnson, Legally Exempt Specialist	723-8313 ext. 832	Legally Exempt questions (LE)
Tessa Stacy, Infant Toddler Mental Health Specialist	(607) 201-5678	Infant Toddler caregiver support
Cortney Nornhold, Infant Toddler Specialist	723-8313 ext. 826	Infant Toddler questions, training, and support
Jennifer Perney, CCR&R Director	723-8313 ext. 872	Comments, concerns and complaints
<b>NORWICH OFFICE</b>		
Julie Henry, Chenango CCR&R Coordinator	373-3555 ext. 1522	General questions, program updates, training needs, LE questions,
<b>OWEGO OFFICE</b>		
Ann Shear, CCR&R Training Coordinator	687-6721 ext. 1186	CDA classes/training questions
Lisa Rosa, Tioga CCR&R Coordinator	687-6721 ext. 1187	Parent referrals, program updates, training needs, LE questions

## PROFESSIONAL DEVELOPMENT STAFF

Family Enrichment Network is ready to meet your training needs with our knowledgeable and highly experienced trainers.



Ann Shear  
CCR&R Training Coordinator



Julie Henry  
Chenango CCR&R Coordinator



Lisa Rosa  
Tioga CCR&R Coordinator



Leslie Vermaat  
Training and Technical Assistance Specialist



Tessa Stacy  
Infant Toddler Mental Health Specialist



Cortney Nornhold  
Infant Toddler Specialist



Cathy Lipski  
CACFP Coordinator

## TRAINING POLICIES AND INFORMATION

### \*\* Registration Information \*\*

You must register for trainings **two weeks prior** to the date. All EIP paperwork, FEN scholarship paperwork, VOICE/CSEA number, and/or payments must be received to be considered registered. You must notify us of any scholarship submission. Your training enrollment is pending until we receive any scholarship award notification/voucher, so you need to apply early!

You are not registered for a training at FEN unless you contact us!

Please make all checks payable to Family Enrichment Network, Inc.

If paying by credit card, you must have an email address. Please call for details.

Call Crystal at 723-8313 ext. 825 or email her at [crozelle@familyenrichment.org](mailto:crozelle@familyenrichment.org) to register.

Training for the Webcasts must be done through SUNY PDP at:

[www.ecetp.pdp.albany.edu/webcasting.aspx](http://www.ecetp.pdp.albany.edu/webcasting.aspx)

### \*\* EIP Information \*\*

Scholarship funding to participate in training may be available through the Educational Incentive Program (EIP). For more information or to apply for a scholarship, please visit

[www.ecetp.pdp.albany.edu](http://www.ecetp.pdp.albany.edu). You may also contact EIP at [eip@albany.edu](mailto:eip@albany.edu) or 800-295-9616 or 518-442-6575.

Trainings are eligible for EIP if conducted by a NYS Credentialed Trainer. This is indicated in the training listing.

\*Apply early, as funding is limited and could run out.

### \*\* CSEA VOICE Information \*\*

Scholarship funding may be available through CSEA VOICE for family, group family, and legally exempt providers. Visit [voiccese.org](http://voiccese.org) to obtain a CSEA ID and for more information.

### \*\* Refund Policy \*\*

All trainings, conferences and/or workshops are NON-Refundable, unless cancelled by us.

### \*\* Cancellations \*\*

We reserve the right to cancel trainings if fewer than 3 people are registered, or in case of inclement weather. If you are registered, you will be contacted in the case of a cancellation. If you are unable to attend a training you are registered for, please cancel your registration by calling 723-8313 ext. 825.

### \*\* Inclement Weather \*\*

If Family Enrichment Network closes the agency for all programs because of inclement weather, all trainings are also cancelled. To find out if the agency has closed, call the main number and listen to the message at (607) 723-8313, check our Facebook page, or check our website for updates.

### \*\* Accessibility \*\*

In Johnson City, the front doors do lock after the trainings begin. Please arrive on time. If you need to leave the building after a training begins, take someone with you to let you back inside.

### \*\* Training Certificates \*\*

Training certificates will be distributed at the training if you registered and paid in advance. If you are not registered for a training, but walk in, a training certificate will be provided upon completion of class AND after payment is received. There will be a \$5.00 charge for duplicate training certificates requested. You must complete the entire training in order to receive training credit. There is no option to take a partial training.

### \*\* Children \*\*

To respect the professional training of others, please do not bring children to the trainings. There is no child care available and you will be asked to leave.

### \*\* Training Etiquette \*\*

Please be respectful of others by turning your cell phone to vibrate and limiting talking to that which is appropriate to the training.

## IMPORTANT PAYMENT INFORMATION

**SUNY Professional Development Program Educational Incentive Program (EIP):** EIP is a voluntary scholarship program and may be available to help cover the costs of trainings. Please apply for EIP at [www.ecetp.pdp.albany.edu](http://www.ecetp.pdp.albany.edu). We do not want EIP applications or a copy of your income taxes. We only need proof of EIP eligibility (for example, approval letter, denial letter). If you are 100% eligible for EIP funding, you do not have to pay a co-pay. If you are 75% eligible for EIP, you will need to pay the remaining balance due. EIP vouchers must be signed and turned in for each training.

**CSEA/VOICE Professional Development Training Program:** Family Enrichment Network is an approved training organization. Family and group family child care providers can obtain their CSEA ID and apply for training scholarships through <http://voicecsea.org/>.

**FEN Scholarship:** A FEN Scholarship may be available to help you cover the training cost, if eligible. Eligibility for the FEN Scholarship will be reviewed annually. Proof of income will be reviewed, as well as program financial information. Economic hardships will be evaluated on an individual basis; this will determine your co-pay amount. Upon award, you will receive a voucher for each class you are approved for. You must turn in the voucher as payment for each training.

You will not be enrolled in training until payment is made or proof of scholarship is provided.

Classes not eligible for scholarships are listed. To be eligible for EIP, classes must be approved through SUNY PDP and conducted by a credentialed or verified trainer. Classes are submitted for approval by our trainers.

Classes not currently approved for EIP include MAT and the Health and Safety Training (for non-registered/licensed providers).

All classes should be eligible for the CSEA/VOICE scholarship, as Family Enrichment Network is an approved training organization.

Classes not eligible for the FEN Scholarship include MAT, Health and Safety Training (start-up grants may be available for providers in the process of registration or licensing), Fall Conference, CPR/First Aid, and CDA. The FEN Scholarship is designed for single, evening classes.

**Please call the training registration specialist with questions about how payment works.**

## TRAINING CATEGORIES

### Office of Children and Family Services (OCFS) Categories:

- |  |  |
|--|--|
| 1 - Principles of Childhood Development        | 6 - Child Abuse and Maltreatment Identification/Prevention |
| 2 - Nutrition and Health Needs of Children     | 7 - Statutes and Regulations Pertaining to Child Day Care  |
| 3 - Child Day Care Program Development         | 8 - Statutes and Regulations Pertaining to Child Abuse     |
| 4 - Safety and Security Procedures             | 9 - Education and Prevention of Shaken Baby Syndrome       |
| 5 - Business Record Maintenance and Management |  |

**BROOME COUNTY TRAININGS**

Located at: Family Enrichment Network, 24 Cherry Street, Johnson City

**JANUARY****Virtual Director Health and Safety**

You must register with both SUNY PDP and FEN for this training. [www.ecetp.pdp.albany.edu/findtraining.aspx](http://www.ecetp.pdp.albany.edu/findtraining.aspx)

Presenter: Leslie Vermaat  
 Dates: Jan 19, 21, 26, 28 & Feb 2  
 Time: 9am-12pm each day  
 Training credit: 15 hours total  
 Cost: \$250  
 Target Audience: CCC, SACC & LE group  
 Class Type: Virtual

**2Fer Tuesday:**

Come to 2 workshops back-to-back

**Make It Weird and Wonderful**

Expand your fruit horizons as you explore a virtual store of weird and wonderful fruits and veggies in this fun and playful presentation. Learn about new recipes, flavors, textures, and colors from around the world that are found at your local grocery store. Practice using new and fruitful ideas in your lesson plans and activities to include science, math, and literacy.

**All About Singles**

Come learn about single-sized servings and see if they meet nutritional guidelines.

Presenter: Cathy Lipski  
 Date: Jan 19  
 Time: 6:30-8:30pm  
 Training credit: 2 hours  
 Cost: Free for CACFP  
 Target Audience: FCC, GFCC & LE  
 Class Type: In-person

**In case of inclement weather, check to see if your training is cancelled!**

How?

Check Family Enrichment Network Facebook page. If the agency is closed, the training is cancelled.

OR

Call the main number—723-8313. If the message says the agency is closed, the training is cancelled.

**FEBRUARY****Attachment 101—Virtual**

Healthy attachment to caregivers is an important element in child growth and development. Learn about the styles of attachment and the impact they may have on relationships throughout life. Explore ways that you as a child care provider, can promote healthy attachment with your day care children.

Presenter: Leslie Vermaat  
 Date: Feb 9  
 Time: 6:30-8:30pm  
 Training credit: 2 hours  
 OCFS Category: 1 & 3  
 Cost: \$70/ EIP  
 Target Audience: ALL  
 Class Type: Virtual

**CPR/First Aid for Couples**

Celebrate Valentine's Day by learning how to restart a heart.

When you reserve your 45 minute time slot, a friend or family member can become certified at half the regular price. The second person is NOT eligible for scholarships.

Social distancing will be maintained and COVID cleaning protocols will be followed. A book and test will be send to each participants so that a written test can be taken at home prior to your appointment to demonstrate your hands-on skills.

Date: Feb 16  
 Time: appointments between 4-8pm  
 Cost: \$80 for first person—\$40 for second person  
 Target Audience: ALL  
 Class Type: In-person

## BROOME COUNTY CONTINUED

Located at: Family Enrichment Network, 24 Cherry Street, Johnson City

### MARCH

#### **Health and Safety**

This competency based 15-hour training provides a foundation for practices that promote and protect the health and safety of children in home-based child care. Successful completion is required for all new group and family child care providers prior to becoming licensed or registered, as well as existing providers who change location or modality.

You must register with both SUNY PDP and FEN for this training.

[www.ecetp.pdp.albany.edu/findtraining.aspx](http://www.ecetp.pdp.albany.edu/findtraining.aspx)

Presenter: Leslie Vermaat  
Date: Feb 11, 18, & 23  
Time: 8am– 2pm each day  
Training credit: 15 hours total  
Cost: \$250  
Target Audience: FCC, GFCC, LE  
Class Type: In-person



#### **ACES 101—Virtual**

This session will focus on the Adverse Childhood Experience (ACEs) and how they can affect a person from childhood through adulthood.

Participants will have an opportunity to determine their own “ACEs score.” Trauma and its effect on brain development will be discussed. This training was created by David Wallace, LCSW and Camela Hughes, PhD from the LaSalle School.

Presenter: Leslie Vermaat  
Date: Feb 25  
Time: 5:30-8:30pm  
Training credit: 3 hours  
OCFS Category: 1, 3, & 6  
Cost: \$105/ EIP  
Target Audience: ALL  
Class Type: Virtual

#### **The Role of Child Care in Preventing Child Abuse—Virtual**

This course will focus on the family child care provider’s role in helping to prevent child abuse. We’ll talk about ways providers can help families reduce stressors and share ideas for helping parents to interact positively and have fun with their children.

Presenter: Leslie Vermaat  
Date: March 2  
Time: 6:30-8:30pm  
Training credit: 2 hours  
OCFS Category: 6 & 8  
Cost: \$75/ EIP  
Target Audience: FCC, GFCC, & LE  
Class Type: Virtual



#### **2Fer Tuesday:**

Come to 2 workshops back-to-back

#### **Make It Weird and Wonderful**

Expand your fruit horizons as you explore a virtual store of weird and wonderful fruits and veggies in this fun and playful presentation. Learn about new recipes, flavors, textures, and colors from around the world that are found at your local grocery store. Practice using new and fruitful ideas in your lesson plans and activities to include science, math, and literacy.

#### **All About Singles**

Come learn about single-sized servings and see if they meet nutritional guidelines.

Presenter: Cathy Lipski  
Date: March 16  
Time: 6:30-8:30pm  
Training credit: 2 hours  
Cost: Free for CACFP  
Target Audience: FCC, GFCC & LE  
Class Type: In-person

# CHENANGO COUNTY

Located at: Family Enrichment Network, 21 S Broad Street, Norwich

## FEBRUARY

### ACES 101-Virtual

This session will focus on the Adverse Childhood Experience (ACEs) and how they can affect a person from childhood through adulthood. Participants will have an opportunity to determine their own “ACEs score.” Trauma and its effect on brain development will be discussed. This training was created by David Wallace, LCSW and Camela Hughes, PhD from the LaSalle School.

Presenter: Julie Henry  
 Date: Feb 6  
 Time: 9am –12pm  
 Location: Norwich office  
 Training credit: 3 hours  
 Cost: \$90/scholarship eligible  
 Target Audience: ALL  
 Class Type: Virtual



## MARCH

### Child Abuse: When to Make the Call-Virtual

There are ways you can help stop child abuse and maltreatment. We will look at the signs of abuse and discuss when and how to report suspected abuse or neglect.

Presenter: Julie Henry  
 Date: March 11  
 Time: 6 –7:30pm  
 Location: Norwich office  
 Training credit: 1 1/2 hours  
 Cost: FREE  
 Target Audience: ALL  
 Class Type: Virtual

## CPR/First Aid

**If you need CPR/First Aid, give us  
 a call!  
 We can help!**

**Call Julie at 373-3555 ext. 1522  
 to schedule.**

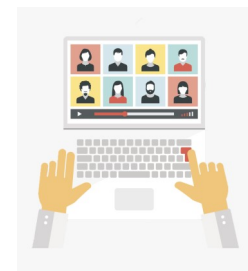
**In case of inclement weather, check to  
 see if your training is cancelled!**

How?

Check Family Enrichment Network  
 Facebook page. If the agency is closed,  
 the training is cancelled.

OR

Call the main number—723-8313. If the  
 message says the agency is closed, the  
 training is cancelled.





# TIOGA COUNTY

Located at: Family Enrichment Network/ Abide in the Vine 1277 Taylor Road, Owego

## JANUARY

### **Gross Motor Activities for Indoors**

Long winter months lie ahead, but that's no reason for children to become couch potatoes. This discussion will explore different ways to provide simple indoor gross motor activities for children during the inclement weather. We'll focus on fun games that require no or very low cost materials, and how to share the activities with parents to keep the fun going at home.

Presenter: Ann Shear  
Date: Jan 13  
Time: 6:30-8:30pm  
Training credit: 2 hours  
OCFS Categories: 2 & 7  
Cost: \$70/ EIP eligible  
Target Audience: FCC/GFCC  
Class Type: Virtual



## FEBRUARY

### **Caring For Your Business**

You are in the business of caring for children, but what are you doing to care for your business? In order to grow and thrive, all businesses need firm roots planted and then maintenance to strengthen the business. This session will discuss basic topics that will help assure firm roots and planning to keep your business running smoothly. We will also discuss challenges posed by the current health crisis and ways you can mitigate adverse effects to your business.

Presenter: Ann Shear  
Date: Feb 10  
Time: 6:30-8:30pm  
Training credit: 2 hours  
OCFS Categories: 5 & 7  
Cost: \$70/ EIP eligible  
Target Audience: ALL  
Class Type: Virtual

## MARCH

### **Trauma-Informed Child Care: fitting the Piece Together**

This workshop will discuss trauma in young children. We'll learn about the ACE study and its role in advancing our understanding of the effects of trauma. We'll also learn how to identify children who have experienced trauma, ways to respond to mitigate the long-term damaging effects, and when a referral should be made for additional help.

Presenter: Ann Shear  
Date: March 10  
Time: 6:30-8:30pm  
Training credit: 2 hours  
OCFS Categories: 1 & 7  
Cost: \$70/ EIP eligible  
Target Audience: FCC/GFCC  
Class Type: Virtual

## **ON-DEMAND VIRTUAL TRAINING AVAILABLE**

Are you behind on your training? Do you want to avoid in-person training, but yet want some connection with a human being? We can help! You will be trained individually or as a small group by Leslie Vermaat, NYS Certified Trainer. Pick a topic, date and time meet electronically and you would get virtual training in the comfort of your home!

Here are some of the options available:

- Child Development Basics and Red Flags
- Competent Supervision
- Emotional Literacy: Books, Feelings & Mental Health
- Taxes, Recordkeeping and Business Management
- Keep Calm and Carry On
- Keeping Children Safe
- Introduction to FLIP-IT
- Boundaries

Contact Crystal Rozelle at Ext. 825 or Leslie Vermaat at Ext. 884 if you are interested in scheduling a virtual training or finding out more information.



Family Enrichment Network  
24 Cherry Street  
Johnson City, NY 13790-0997



The mission of Family Enrichment Network is to provide supportive services for the optimal development of children and families. This mission includes a strong commitment to partnering with families and community agencies to develop and provide programs to achieve the best results for children and families. We believe in coordinating children and family services using a comprehensive and collaborative approach to improve their quality of life while ensuring the greatest value for our investment in child, adult, and parent development .

To learn more about our mission, and share in our vision that all children and families have the opportunity to grow and develop to their full potential, please visit our website at [www.familyenrichment.org](http://www.familyenrichment.org).